

DATASHEET

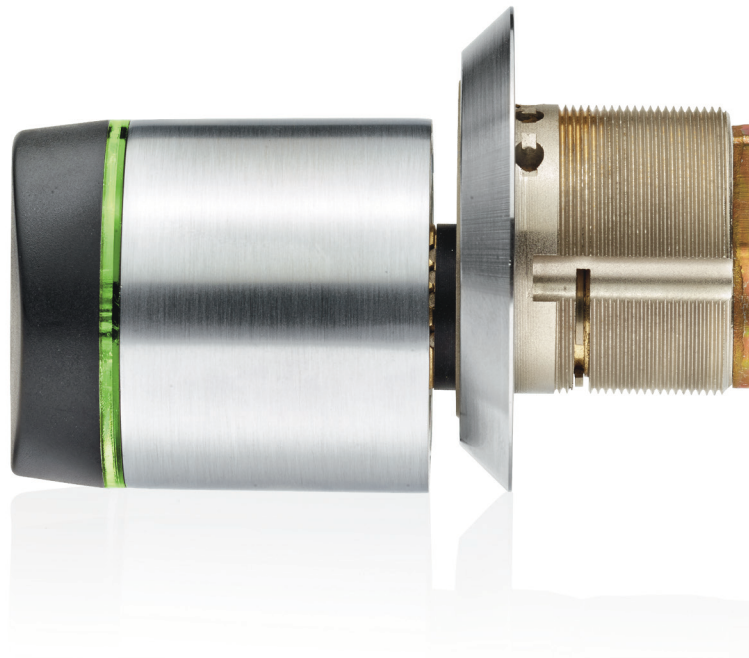
SALTO GEO MORTISE CYLINDER by SALTO

Extensive range of wire-free, stand-alone electronic cylinders designed for doors where fitting an electronic escutcheon is not possible or required (e.g. antique doors). In addition to use on doors, other applications including post boxes, server racks, cupboards or boxes can be controlled protected by SALTO GEO electronic camlocks and padlocks against theft or unauthorized use.

www.saltosystems.com

TECHNICAL SPECIFICATIONS: SALTO GEO MORTISE CYLINDER

SALTO
inspired access



TECHNICAL DATA:

Housing dimensions:	43 x Ø38 mm 1-11/16" x Ø1-1/2"
Weight:	40 g 1.4 Oz.
Cover material:	Zinc alloy
IP class:	IP55* - Standard IP66* - Water Resistant
Certifications:	CE, FCC, IP, IK
Exterior length:	From 32 mm to 44 mm From 1-1/4" to 1-3/4"
Power source:	1 Lithium standard battery CR2
Number of openings:	i-Button version: up to 60,000 Contactless versions: up to 40,000 depending on the RFID technology
Maximum events on lock audit:	2200 (non-volatile memory)
Environmental conditions	-20°C / +60°C -4°F / 140°F

ID TECHNOLOGIES:

MIFARE:*	•
BLE Smart:	—
NFC:	•
Legic:**	•
HID iClass®:	•
Picopass:	—
i-Button:	•

* MIFARE® (DESFire EV2, Plus, Ultralight C, FlexSpace, Classic - ISO/IEC 14443).

** Legic Prime and Legic Advant

TECHNOLOGY PLATFORMS:**SALTO SPACE:**

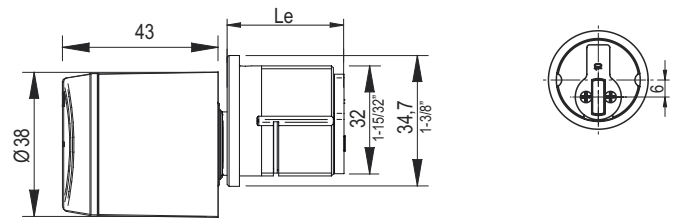
Smile - Selfprogrammable	•
ROM:	•
SVN data-on-card:	•
SALTO RFnet:	•
SALTO BLUEnet:	—

SALTO KS:

SALTO KS:	•
-----------	---

SALTO SALLIS:

SALLIS:	•
---------	---

TECHNICAL DRAWING:**OPENING MODES:**

Standard:	•
Office mode:	•
Timed office:	•
Automatic opening:	•
Automatic opening + office	•
Toggle:	•
Timed Toggle:	•
Amok mode:	—
Exit leaves open mode:	—

OPTIONS:**READER COLOUR:**

Black:	•
White:	•

FINISHES:

Satin chrome	•
Polished chrome	•
PVD bright brass type	•
PVD satin brass type	•
Satin chrome black	•
BioCote® (Satin chrome)	•